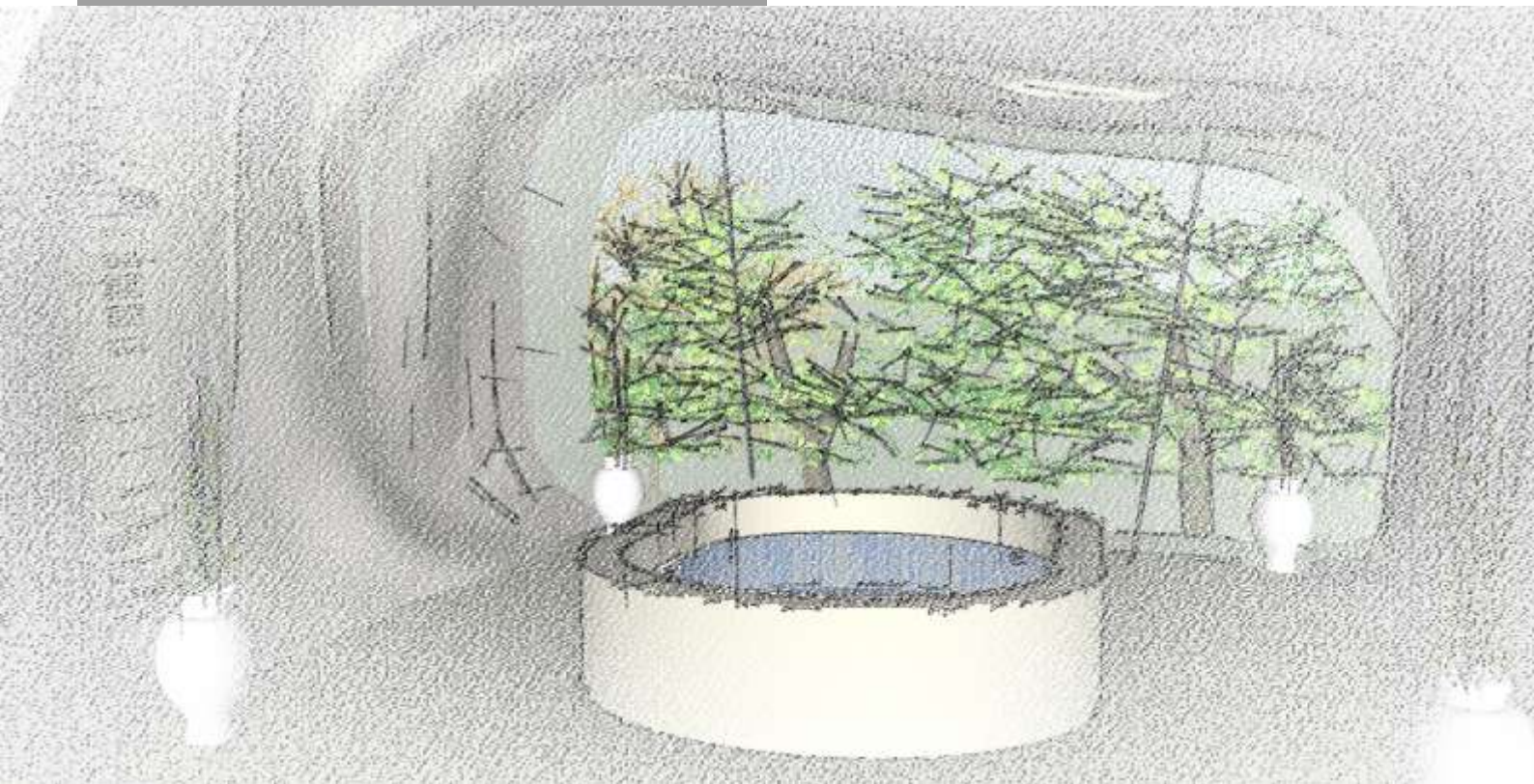


# *Abalit BOOK*



**abalit®**

Developed **by** Abalit®

# *Abalit* *BOOK*

Company	00
Products	01
Services	02
Applications	03
Quality	04
References	05

# Company 00

## *Location*

### Company

The main activity of Abalit Elementos Moldeados is to fully or partially satisfy every necessity related to the use of materials of solid surface.

Traditionally our company has mainly directed its attention to the fields of general construction and to the architecture and its applications in kitchens, bathrooms, laboratories, hospitals, restaurants and hotel business.

Abalit offers you a wide variety of applications for uses in several fields.

Abalit Elementos Moldeados SL is a dynamic and flexible company . Our success is founded on an extreme attention for quality at all levels and a great care for every need of our customers .

Our extensive knowledge of materials and productive processes, an adequate technology and a highly qualified staff with a great experience in the treatment of solid surface materials are our secrets for obtaining a product of the highest quality. Our experience in this kind of products and our great attention towards our customer are the mainly features which make Abalit Elementos Moldeados S.L. an unique and special company.



## abalit®

**Abalit** Elementos Moldeados S.L.  
Pol.Ind. Can Cortès Naus 9-10, km 43 C-55  
E-08262 Callús (Barcelona)  
SPAIN

**e-mail:** [info@abalit.com](mailto:info@abalit.com)

**Tel:** 00 34 938 361 219

**Fax:** 00 34 938 361 219

Developed **by** Abalit ®

## *Resources:*

- High Qualified People
- Engineering Department
- Software
- 6D CNC
- CNC Routers
- Membrane Press
- Hydraulic Presses
- Ovens



Company 00

*Factory*



Developed by Abalit ®

# Products 01

## Solid Surface Material

Solid surface's material is composed by a mixture of acrylic resins with Hydrated Alumin. The result is a high quality material.

It is a strong material, elegant and warm and pleasant to the touch. It can be worked in many ways, in order to obtain every desired shape. Its main qualities are the following ones:

- Resistant to stains and chemical agents.

The solid surface is a material without pore, homogeneous, aseptic and waterproof that can be cleaned easily without losing its original aspect, preserving its beauty. In addition it is resistant to the majority of chemical agents.

- Joints imperceptible to the touch and to the sight.

The joints among the plates are made of the same material, in order to achieve the uniformity of the product. It does not matter which size a product is, it will always looks like a unique piece of material.

- Resistant to impacts.

It is a very solid material, resistant to blows and to every form of maltreatment. It does not splinter, crack or stain. However, little damages can be repaired very easily.

- Resistant to the heat and retardant to fire.

The cigarette ash does not damage it, as it only leaves a brown stain that can be easily cleaned with a scourer like "Scotch-Brite ®" and an abrasive cleaner.

- Guaranteed quality.

The material has to be cleaned with regularity. In this way, year by year, it will always looks like new.

*Solid Surface*



Developed by Abalit ®

# Services 02

*Services*

## Services

**Abalit offers you a wide variety of services in order to realize your own ideas.**

### **We offer you:**

The opportunity of developing and producing every project in which is made use of materials of solid surface, offering you the best solution in every single case.

The opportunity of manufacturing your own models or prototypes with our materials. Joining your design with our materials, the result can't be but the best.

The opportunity of developing and manufacturing models from a concept of your own that you provide us. During the design and development of your project we offer you all the support of our technical team, who will guide you during the whole process. If you prefer it, our team can also develop independently your initial idea.

Our technical team is at your disposal for the development of projects related with materials of solid surface, independently of the process of manufacture of those.

The maximum dedication, speed and professionalism in the development of any project.

Our commitment to quality and responsibility in front of every request.

Assistance in every stage of the project. If you do not wish to take part to those stages of the project which are not convenient for your business, we can easily contact for you companies that can provide these services. We have a wide web of relations with companies which work in different but complementary fields.

Developed **by** Abalit ®

## Services 02

### *Work flow*

In Abalit® we are constantly looking for new working methods that allow us to move forward and more efficiently.

*From your idea ...*



*Analysis  
&  
Developpment*



*Final Product*



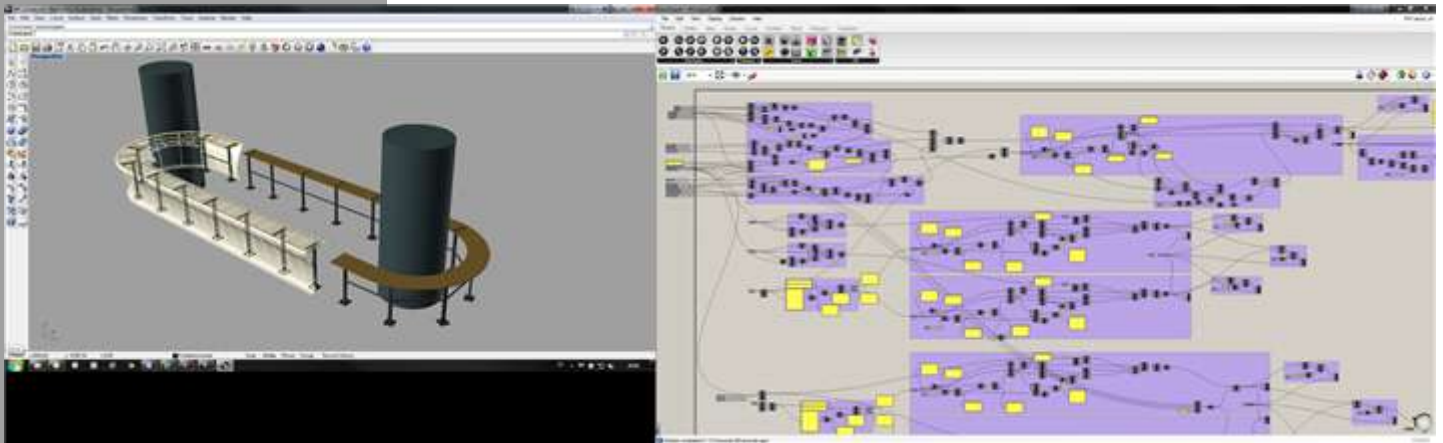
*Fabrication drawings*



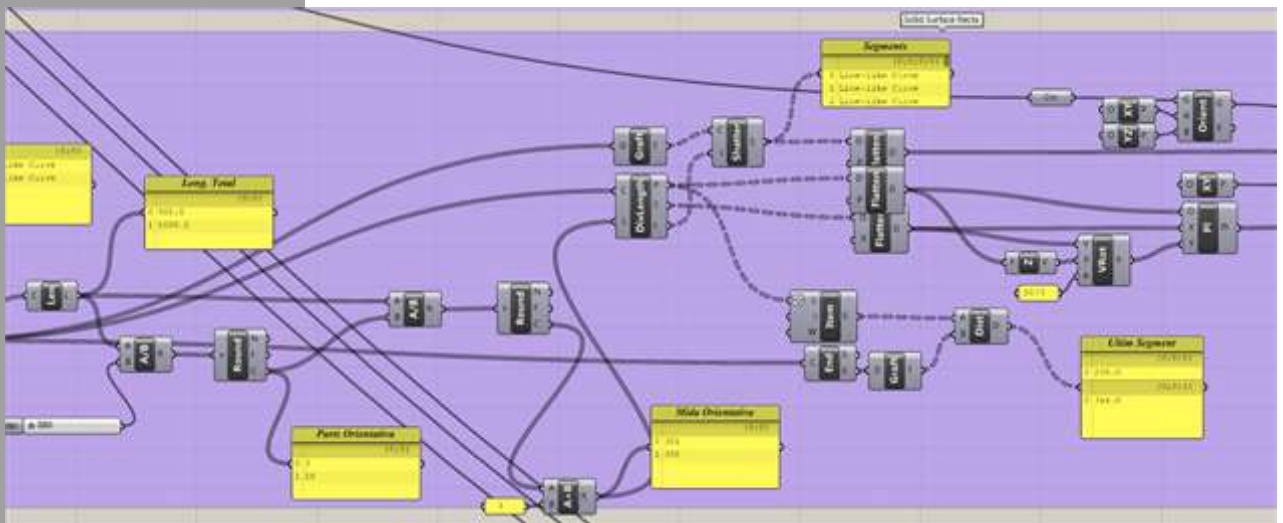
Developed **by** Abalit®

## Analysis

Services 02  
Technology



## Parametric Design



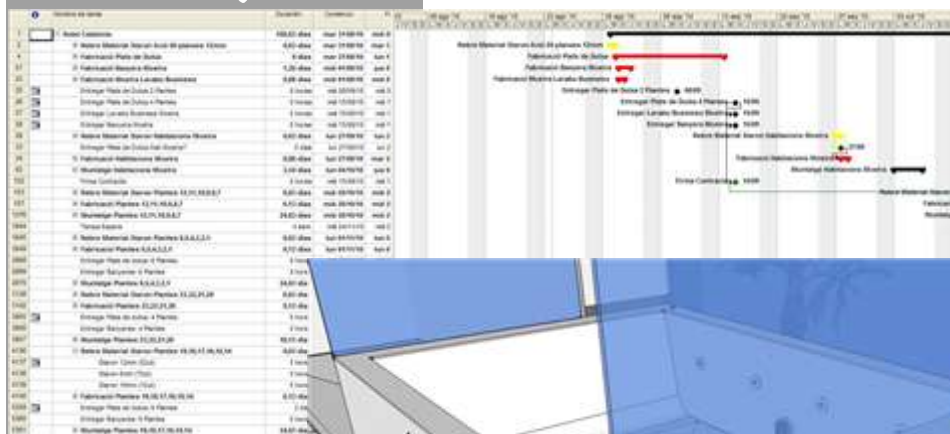
Some references .....

Developed by Abalit®

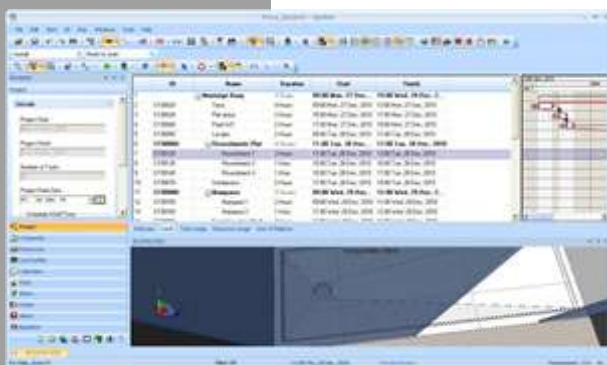
Analysis

Quality 04

Technology

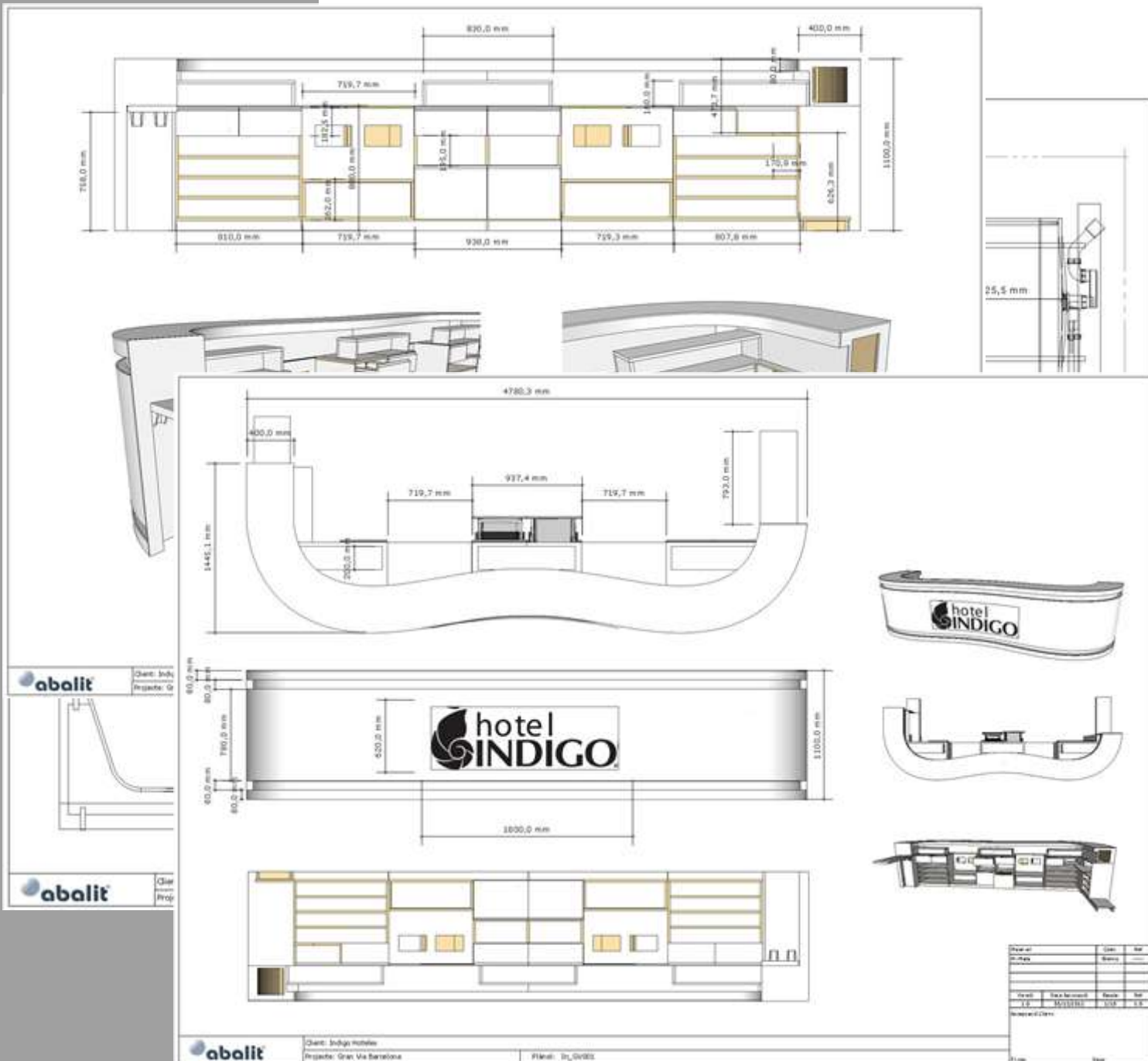


4D Design



Some references .....

Developed by Abalit ®



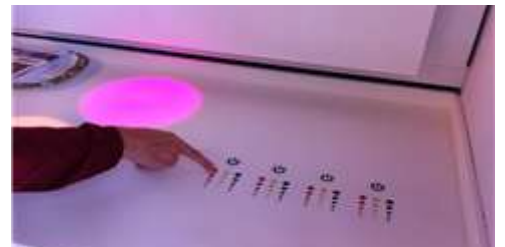
Some references .....

Developed by Abalit ®

*Interactive  
Products*

Services 02

*Technology*

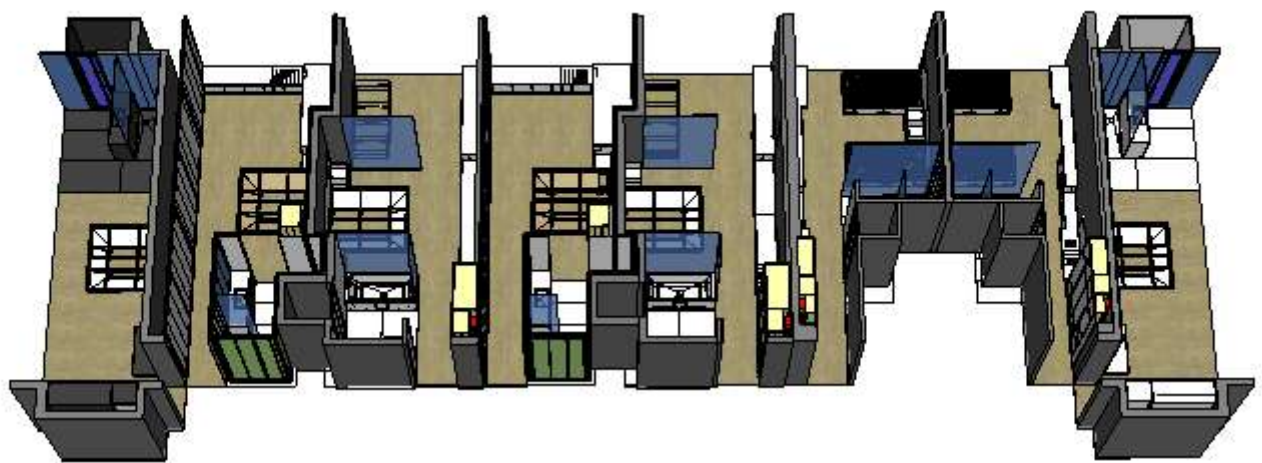


*Some references .....*

Developed by Abalit ®

*3D Design  
Examples*

# Services 02

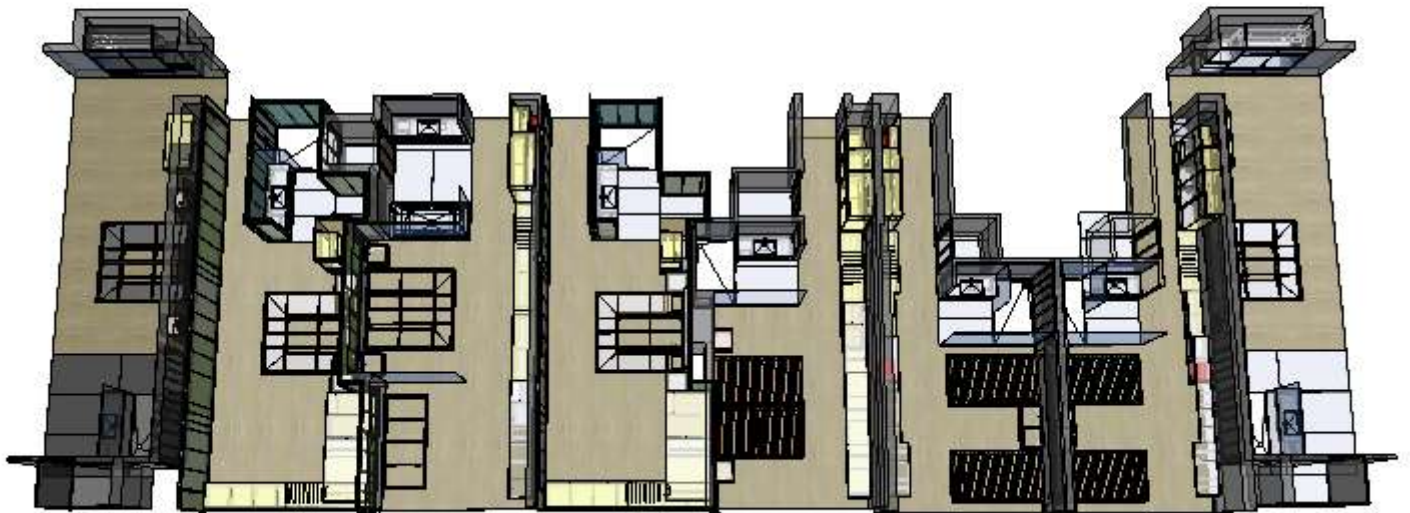
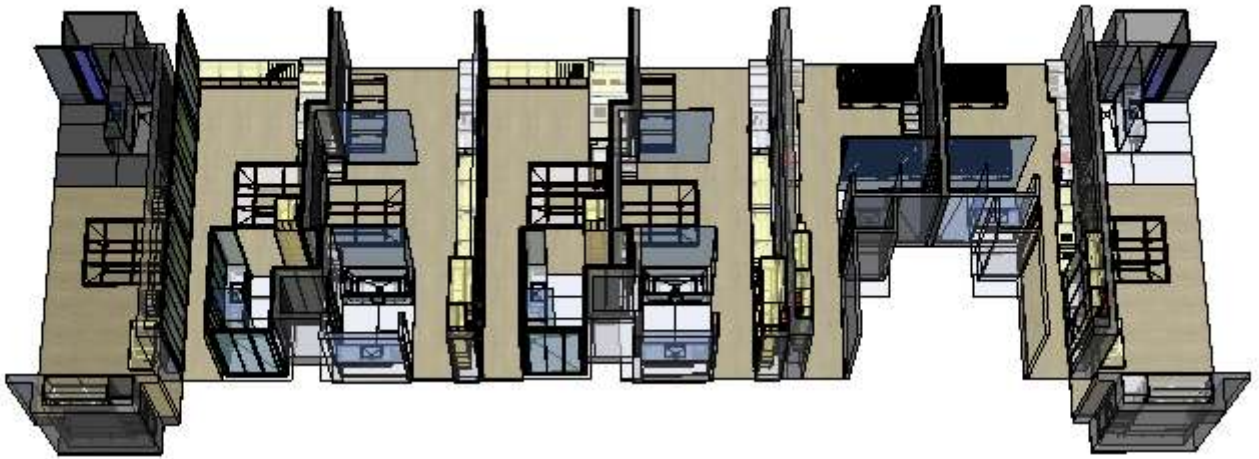


*Some references .....*

Developed **by** Abalit ®

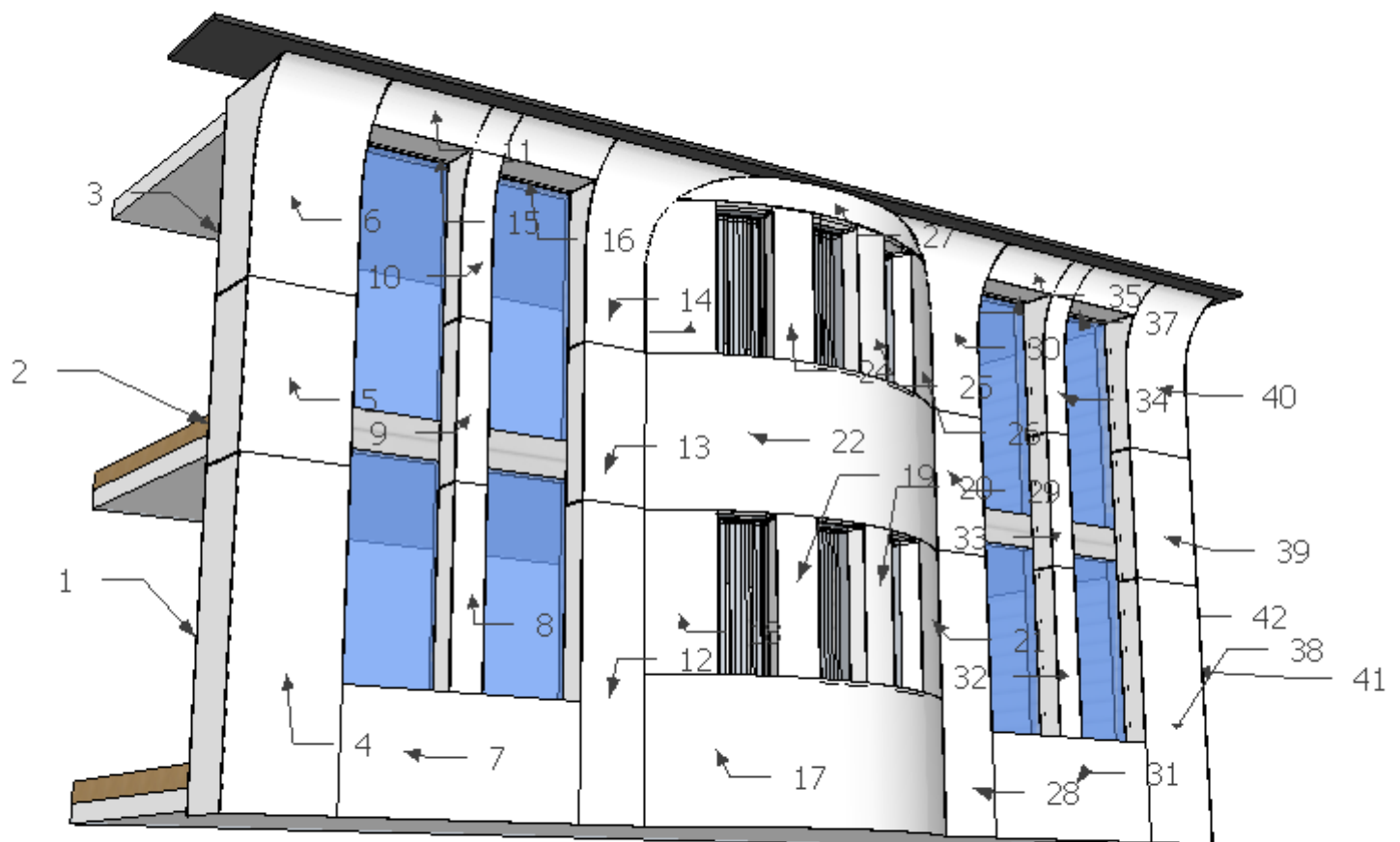
*3D Design  
Examples*

Services 02



*Some references .....*

Developed **by** Abalit ®

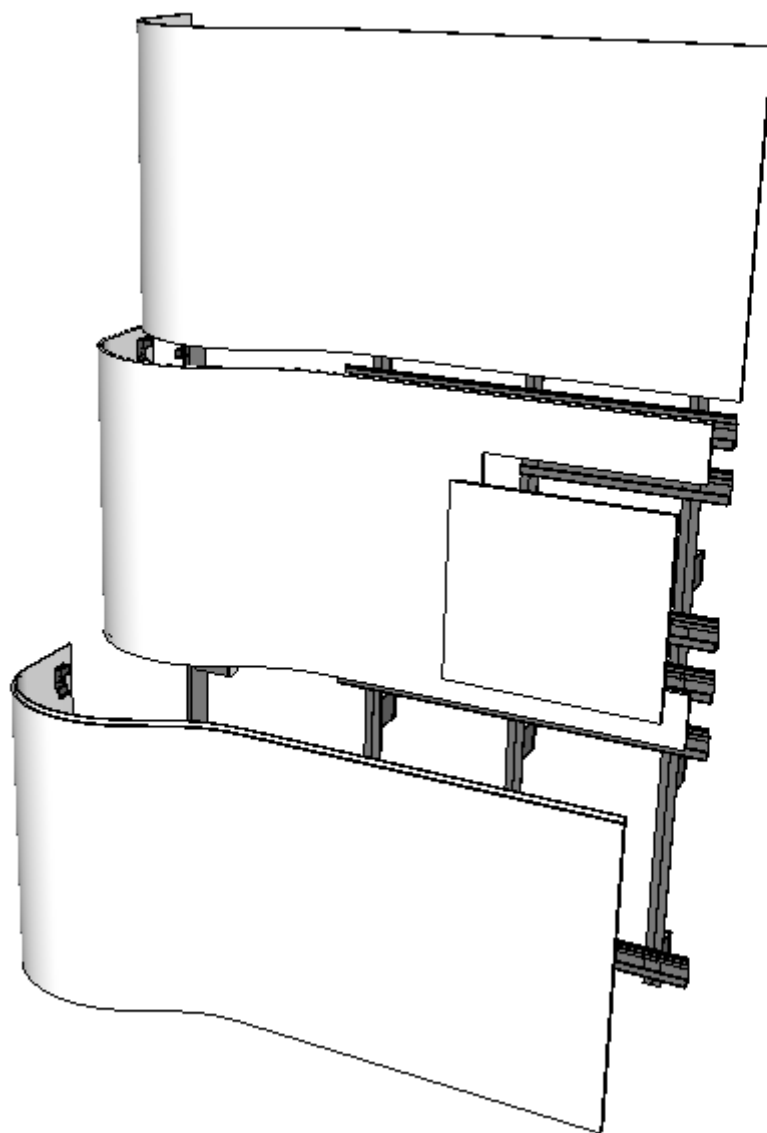


*Some references .....*

Developed **by** Abalit ®

*3D Design  
Examples*

## Services 02



*Some references .....*

Developed **by** Abalit ®

# Applications 03

## *Uses & Applications*

### Uses and Applications

Its possible applications are infinite. These are some examples of its uses:

**Kitchens:** In the kitchen, the materials of solid surface can convert a place of daily use in a place magnificent for design and functionality. Thanks to the absence of joints and the hardness of the material, the maintenance will be an easy task and the surfaces will always look beautiful.

**Bathrooms:** A great deal of luxury can be brought using this material in bathrooms. With the solid surface, the goal is to satisfy our need of pleasure, for the view as well as for the tact.

**Hotels:** In the hotels you can find the most various forms and applications of solid surface. From the logo of the hall, the reception desk, the bar, the baths, the spa's, the discotheque, in facing of walls, in the elevators, in the rooms, the lamps, as far as the imagination of the creators has arrived.

**Restaurants:** In restaurants the cleaning and the maintenance are fundamental. So it is good to know the qualities of solid surfaces, since with them it is possible to have surfaces easy to clean. Being a non porous material, it does not stain and it looks like new practically forever.

The great variety of colors made it the most versatile material in this field, compared to the others.

**Hospitals:** In places where everything must be aseptic, the solid surface overcomes all tests. Its technical qualities, for example its resistance to chemical agents, make it the perfect choice for laboratory top, surgical washbasin, trays for babies and much more applications.

**Commercial Spaces:** In commercial spaces, thank to the beauty of the material and its unique qualities, we can make creations of spectacular shapes. Moreover, using lights we can obtain a marvellous visual impact.

**Offices:** Every day more companies understand that their offices are a signal of their identity. Using materials of solid surface we can do reception desks, meeting tables and spectacular facing of walls which simply looks like a unique piece of material, with joints imperceptible to the touch and to the sight .

**Furniture:** Every day more designers use solid surface to carry out projects which combine the most spectacular and complicated forms with the highest demands for quality and functionality.

Developed by Abalit ®

# Applications 03

## *Hotels & Aparthotels*



*Some references .....*

Developed **by** Abalit ®

# Applications 03



*Hotels  
&  
Aparthotels*



*Some references .....*

Developed **by** Abalit ®

# Applications 03

## *Hotels & Aparthotels*



*Some references .....*

Developed **by** Abalit ®

# Applications 03



*Hotels  
&  
Aparthotels*



*Some references .....*

Developed by Abalit ®

# Applications 03



*Hotels  
&  
Aparthotels*



*Some references .....*

Developed by Abalit ®

# Applications 03

*Hotels  
&  
Aparthotels*



*Some references .....*

Developed by Abalit ®

# Applications 03

## *Wellness & Spa*



*Some references .....*

Developed **by** Abalit ®

# Applications 03

## *Hospitals*



*Some references .....*

Developed **by** Abalit ®

# Applications 03

## *Commercial*



*Some references .....*

Developed **by** Abalit ®

# Quality 04

## *Solid Surface Certificates*



*Some references .....*

Developed **by** Abalit ®

# References 05



Hotel W  
Barcelona



Hotel Anglí  
Barcelona



Hotel Mandarin Oriental  
Barcelona



Eurostars Munich  
Munich

*Some references .....*

Developed **by** Abalit ®

# References 05



Hotel Pacha  
Ibiza



Hotel Catalonia Fira  
Barcelona



Hotel ME  
Barcelona



Hotel Puerta America  
Madrid

*Some references .....*

Developed **by** Abalit ®

# References 05

## More References

Hospital Germans Trias i Pujol  
(Badalona)

Hospital de Ciutadella  
(Menorca)

Hospital Vall d'Hebrón  
(Barcelona)

Hospital de San Sebastián  
(Guipúzcoa)

Hospital de Bilbao  
(Vizcaya)

Hospital Sant Joan de Déu  
(Barcelona)

Hospital Clínic Barcelona  
(Barcelona)

Hospital Plató  
(Barcelona)

Clínica Teknon  
(Barcelona)

Hospital de Terrassa  
(Terrassa)

.....



Hospital de St.Boi  
Barcelona



Hospital Moises Broggi  
St. Joan Despí



Hospital de Manresa  
Barcelona



Hospital de Bellvitge  
Barcelona

*Some references .....*

Developed **by** Abalit ®

# *Abalit BOOK*



**Abalit** Elementos Moldeados S.L.  
Pol.Ind. Can Cortès Naus 9-10, km 43 C-55  
E-08262 Callús (Barcelona)  
SPAIN

**e-mail:** [info@abalit.com](mailto:info@abalit.com)

**Tel:** 00 34 938 361 219

**Fax:** 00 34 938 361 219

Developed **by** Abalit ®